



### 1000 Series Granulators

#### Application:

Compact, easily movable, soundproofed, low-speed granulators for beside-the-press granulation, engineered for hand feed, robot feed, and conveyor feed. The 1000 Series Granulators are ideal for reject components from the injection, blow molding and extrusion processes.

#### Features:

Model	Throat Size	Cutting Circle Diameter	Throughput	Approximate Weight
1012	10" x 12" (254 x 300 mm)	10" (254 mm)	450 lbs./hr. (203 kg.)	1275 lbs. (579 kg.)
1018	10" x 18" (254 x 457 mm)	10" (254 mm)	550 lbs./hr. (248 kg.)	1440 lbs. (655 kg.)

#### Benefits:

- 3-Blade "scooped" rotor with rotating end discs for maximum cutting efficiency and high inertia flywheel.
- Cumberland-manufactured knives are HCHC steel, specially heat treated with our proprietary process for exceptionally long life, so knife maintenance and replacement costs are minimized.
- Hand knobs provide quick access into screen and pivoting infeed hopper.
- Advanced pivoting infeed design with multi-purpose feed chute.
- Access is simple, quick and convenient for service.
- All interior surfaces are machined and bolted for ease of cleaning.
- Drop-down pull-out cradle with reversible screen offers quick, simple removal.
- Hinged hopper tilts out of the way for unobstructed access to the cutting chamber.
- Compact and easily movable.
- Units have solid steel cutting chamber and bed knife blocks, doweled and bolted end plates for maximum strength.
- Standard integral sound enclosure controls noise and permits access.
- Rotating end discs reduce dust and heat generation.
- Double sealed bearings lubricated for life to minimize downtime.

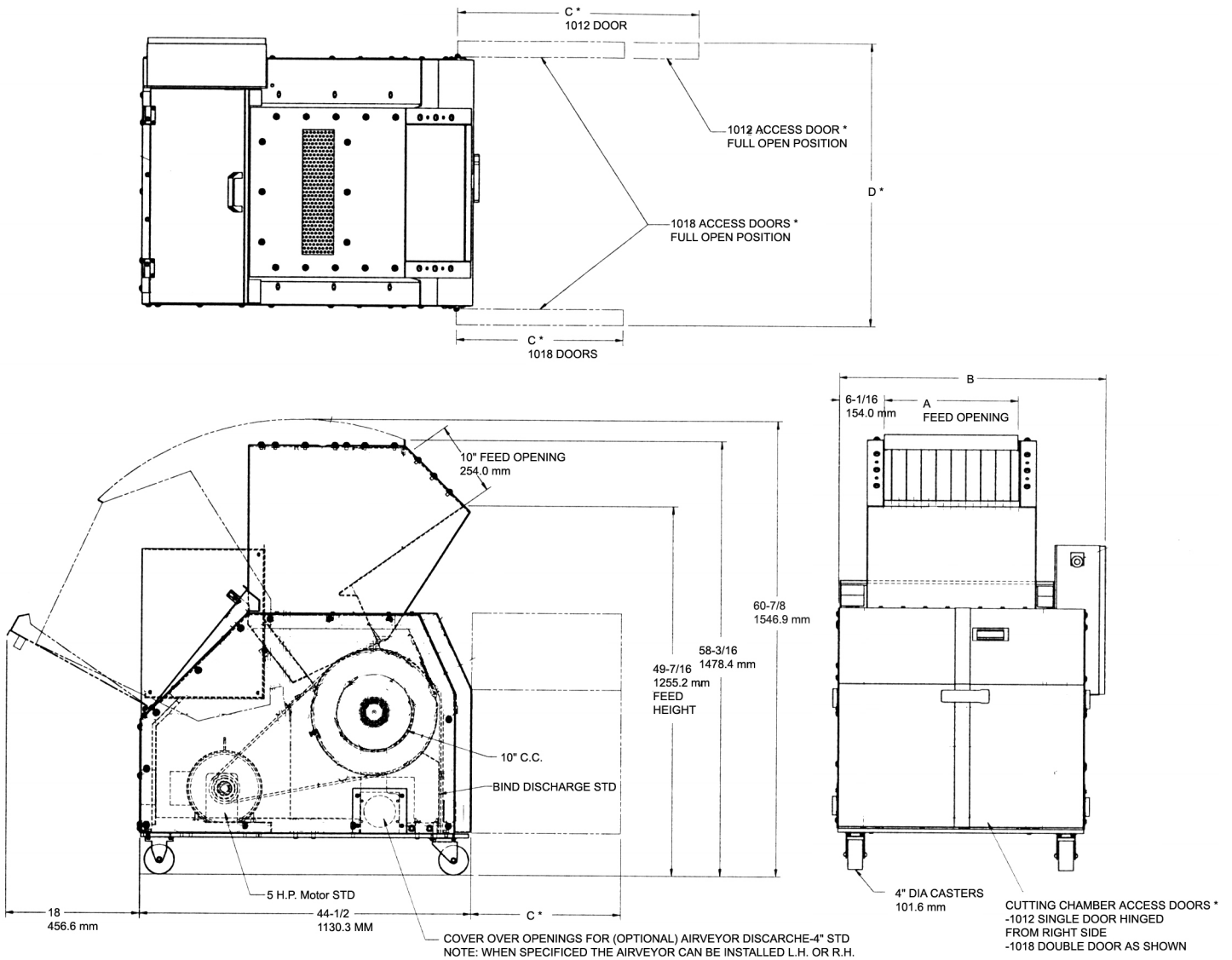
#### Specifications:

	Standard	Standard Options	Special Options
Infeed	Top/Front Feed – Soundproofed		
Cutting Chamber	Tangential, 2-bed knives		
Rotor	3-knife, scooped with end discs		Multi-knife helical, Low speed
Rotor Knives	HCHC, landed		TCSC
Bed Knives	HCHC, 2 edge		TCSC
Screen	1/4" dia. pivoting drop-down compact	3/16", 5/16", 3/8" dia. or larger	
Base	Caster, modular		
Discharge	Metal Bin	Vacuum bin, Airveyor chute	
Motor	5 HP, TEFC, 3/60/230/460	7 1/2 HP (5.5 kW), 10 HP (7.5 kW), (15 HP (11 kW) - 1018 only)	Special voltage (e.g. 208, 380, & 415)
Drive Parts	V-belt and flywheel		
Electrical Components	Safety interlocks		
Controls	230 or 460 volt, NEMA 12 (115v P/B)		
Labels	English	French/Spanish	
Accessories	Sound-Proofed (to approximately 85 dBA)		

— See Page 2 For 1000 Series Drawings —



# Cumberland 1000 Series Granulators:



## Dimensions:

MODEL	A	B	C	D
1012	12 1/4 (311 mm)	29 7/8 (759 mm)	27 (686 mm)	30 (762 mm)
1018	18 1/4 (464 mm)	35 7/8 (911 mm)	17 3/8 (441 mm)	38 3/16 (970 mm)