



1600X Series Granulators

Complete double-walled hopper and sound-attenuated base enclosures provide quiet operation - approximately 85 dBA for most applications.



Unique forward offset design allows access to both upstroke and downstroke bed knives, all at a comfortable working level.

The 3-knife open slant-cut rotor with scooped wings provides for both positive feeding of bulky parts and improved airflow for cooler operation



The screen and screen cradle swing down, allowing complete and simplified access for thorough cleaning.



shown with optional evacuation

Beside-the-Press Granulators Offer a Wide Range of Capabilities

The Cumberland A Series 1600X granulators offer a wide range of capabilities to handle the most demanding injection molding, blow molding and extrusion requirements. With a horsepower range from 20 to 40 HP, throughput capacities from 900 to 1500 lbs./hr, and a wide range of sizes, there is a Cumberland granulator ideal for your specific needs.

Series 1600X models include 16x20 and 16x28. Both provide excellent quality regrind and quiet operation. Unique machined, bolted and doweled construction ensures durability. Double-sealed bearings are lubricated for life. Rotating end discs are standard throughout the A Series line for minimized friction and heat buildup.

1600X Series Granulators

Standard Features

- Pivoting hopper, drop-down removable screen cradle and machined, bolted cutting chamber simplifies cleaning and maintenance
- Low-profile, sound-attenuated infeed systems for robot, hand or conveyor feed applications
- HCHC knives manufactured in-house utilizing Cumberland's proprietary process for heat treating ensures durability and long life
- Oversized solid flywheel

Optional Features

Motor:

- 25, 30 or 40 HP TEFC motors

Infeed:

- Sheet/profile/pipe/feed rolls

Rotor:

- 3 and 5 knife
- 5 knife slant shear

Discharge:

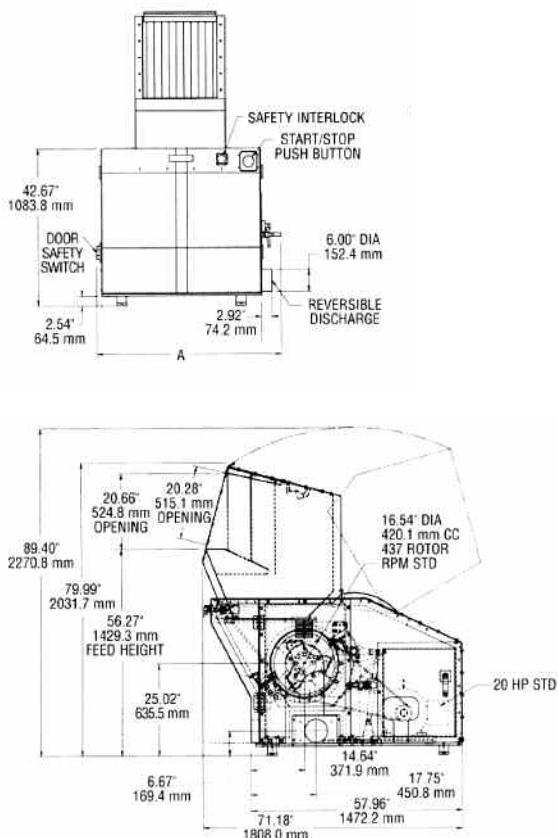
- 1.25", 1.5", 2" or 2.5" vacuum takeoff
- 4" or 5" airveyor
- Bin discharge available on model 1620 only

Knives:

- D2 components and wear-resistant package

Base:

- Caster-mounted
- Evacuation system



Specifications			
Model	1620	1628	1640
Cutting Circle	16.54" (420.1 mm), 437 rotor RPM		
Throughput	900 lbs/hr (408.2 kg/hr)	1500 lbs/hr (680.4 kg/hr)	1800 lbs/hr (818 kg/hr)
Cutting Chamber	16" x 20" (406.4 mm x 508 mm)	16" x 28" (406.4 mm x 711.2 mm)	16" x 40" (406.4 mm X 1016 mm)
Rotor Knives	3 knife open scooped with rotating end discs		
Discharge	6" airveyor		8" airveyor
Evacuation System	Optional		
Motor	20 HP (15 kW TEFC motor standard, 230/460 VAC)		30 HP (23KW) TEFC motor standard 230/460 VAC
Drive Parts	Flywheel/rotor (solid), drive belts, taper lock bearings, and adjustable motor base		
Base	Totally enclosed for sound control, stationary with vibration pad		
Electrical Components	Start/stop push button, complete set of safety interlocks		
Controls	NEMA Type 12		
Feed Height	56.27" (1429.3 mm)		
Overall Height	79.99" (2031.7 mm)		
Overall Length	71.18" (1808 mm)		
Overall Width (A)	51.25" (1301.8 mm)	59.25" (1505 mm)	71.25" (1809 mm)
Weight	3025 lbs. (1372 kg)	3400 lbs. (1542.3 kg)	4000 lbs. (1818 kg)



CORPORATE HEADQUARTERS

2900 S. 160th Street
New Berlin, WI 53151
TEL: (508) 399-6400
FAX: (508) 399-6653
www.cumberland-plastics.com

REGIONAL SERVICE CENTERS (800) 229-2919

ACS Tech Center
4100 Market Place
Flint, MI 48507
TEL: (810) 720-7300
FAX: (810) 720-2598

ALL DATA SUBJECT TO CHANGE WITHOUT NOTICE

©2010 Cumberland Engineering

Bulletin CG2-116.3