



Technical Specification



2000 Series Tangential Granulators

Tel (262) 641-8600 • Fax (262) 641-8653 • www.cumberland-plastics.com • Bulletin: CG2-525.1 • Effective: June 14, 2010 • Supersedes: CG2-525

2000 Series Tangential Granulators

Application:

The 2000 Series Granulators are designed for reclamation of large, bulky, rotationally-molded, blow-molded, and injection-molded parts. They are ideal for bottles, warm collapsed parisons, automobile parts, furniture sections, gas tanks, and industrial containers/tanks. The 2000 Series Granulators' design-features allow a beside-the-press style granulator to deliver high throughputs reclaiming large, bulky parts that would normally require more costly, higher horsepower central granulators.

Features:

Model	Throat Size	Cutting Circle Diameter	Throughput	Approximate Weight
2024	20" x 24" (508 x 610 mm)	20" (508 mm)	1400 lbs./hr. (630 kg.)	5,200 lbs. (2363 kg.)
2036	20" x 36" (508 x 914 mm)	20" (508 mm)	2000 lbs./hr. (907 kg.)	7,000 lbs. (3221 kg)

Benefits:

- Wide infeed accommodates oversized pieces.
- 40° angled, tangential feed and large cutting circle facilitate ingestion of large parts.
- Integral sound reduction reduces noise levels to approximately 85 dBA.
- All servicing is through the front, hinged door.
- Two, segmented, drop-down, pull-away screen cradles provide quick access.
- Screens are removed and out of the way so operator has completely clear access for ease of service.
- Heavy-duty, outboard spherical roller bearings prevent material contamination.
- Large screen area provides maximum throughput.
- Blower evacuation system with optional sound enclosure and filter assembly provides quiet, continuous material evacuation.
- Easy conversion from tray feeding to conveyor feeding.
- Convenient hand or conveyor feed height: approximately 63" (1600mm) high.
- Interchangeable discharge from left to right.

Specifications:

	2024TF		2036TF	
	Standard	Standard Options	Standard	Standard Options
Infeed	Tray/Conveyor feed, sound treated		Tray feed, sound treated	Conveyor feed
Cutting Chamber	Tangential 2-bed knives		Tangential 2-bed knives	
Rotor	Open 3-knife slant cut		Open 3-knife slant cut	
Rotor Knives	3 HCHC, 55° (2 pcs)		3 HCHC, 55° (3 pcs)	
Bed Knives	2 HCHC, 2 edge reversible (2 pcs)		2 HCHC, 2 edge reversible (3 pcs)	
Screen	5/16", drop-down, pull-out (2 pcs)	3/8" and larger	5/16", drop-down, pull-out (3 pcs)	3/8" and larger
Base	Sound enclosed, fork lift		Sound enclosed, fork lift	
Discharge	6" Airveyor chute		8" Airveyor chute	
Motor	30 HP, TEFC, 1800 rpm, 3/60/230/460	40 HP, 50 HP	40 HP, TEFC, 1800 rpm, 3/60/230/460	50 HP, 60 HP
Drive Parts	V-belt, single flywheel	Dual flywheel	V-belt, Dual flywheel	
Electrical Components	NEMA 12 with safety interlocks	Diagnostic panel	NEMA 12 with safety interlocks	Diagnostic panel
Controls	230 or 460 volt		230 or 460 volt	
Labels	Safety/caution/operation	French/Spanish	Safety/caution/operation	French/Spanish
Accessories		Blower, Separator, Stand	Blower, Separator, Stand	Non-soundproofed



Cumberland Engineering LLC • 2900 S. 160th Street • New Berlin, WI 53151

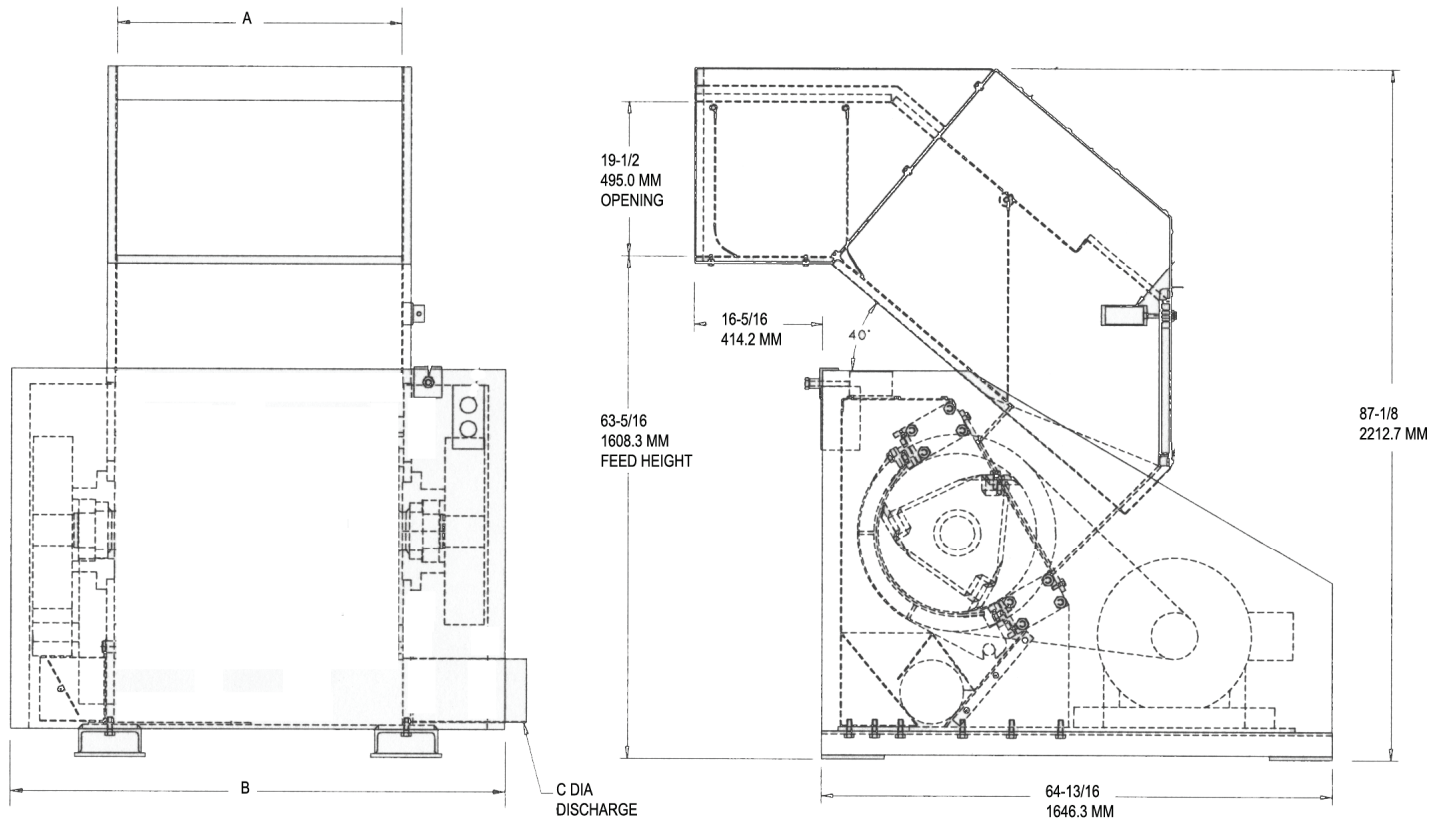
ALL DATA SUBJECT TO CHANGE WITHOUT NOTICE

2000 Series Tangential Granulators

Page 1 of 2

CG2-525.1

Cumberland 2000 Series Tangential Granulators



Dimensions

Model	A	B	C
2024TF	24" (609.6 mm)	52 5/8" (1336.7 mm)	6" (152.4 mm)
2036TF	36" (914.4 mm)	62 5/8" (1590.7 mm)	8" (203.2 mm)