



Technical Specification

3200 Series Granulators



Tel (262) 641-8600 • Fax (262) 641-8653 • www.cumberland-plastics.com • Bulletin: CG6-540.1 • Effective: June 14, 2010 • Supersedes: CG6-540

3200 Series Granulators

Application:

The 3200 Series was designed for centralized reclamation of bulky parts, energy-absorbing, high impact and friable materials, heavy wall pipe and fittings, thick plastic blocks and purgings, non-ferrous metals, wire and cable, and tire shredding reclaim. These granulators are ideal for large solid furniture parts, cast blocks and purgings of ABS, nylon polypropylene, polycarbonate and acetate.

Features:

Model	Throat Size	Cutting Circle Diameter	Throughput	Approximate Weight
3242	32" x 42" (813 x 1067 mm)	36" (914 mm)	6000 lbs./hr. (2722 kg)	30,000 lbs. (13636 kg)
3263	32" x 63" (813 x 1600 mm)	36" (914 mm)	10,000 lbs./hr. (4536 kg)	40,000 lbs. (18181 kg)
3284	32" x 84" (813 x 2134 mm)	36" (914 mm)	13,000 lbs./hr. (5400 kg)	50,000 lbs. (22679 kg)

Benefits:

- The 3200 Series is engineered for the toughest production jobs.
- Powered hopper tilt and cradle swing down for easy access.
- Ruggedly built for maintenance-free operation: Solid hardened rotor and a heavy steel plate cutting chamber, deep welded and precision machined.
- Oversized bearings in integral ground housings permit close knife clearances for longer knife life and cleaner cut material.
- Segmented screen lifts out easily.

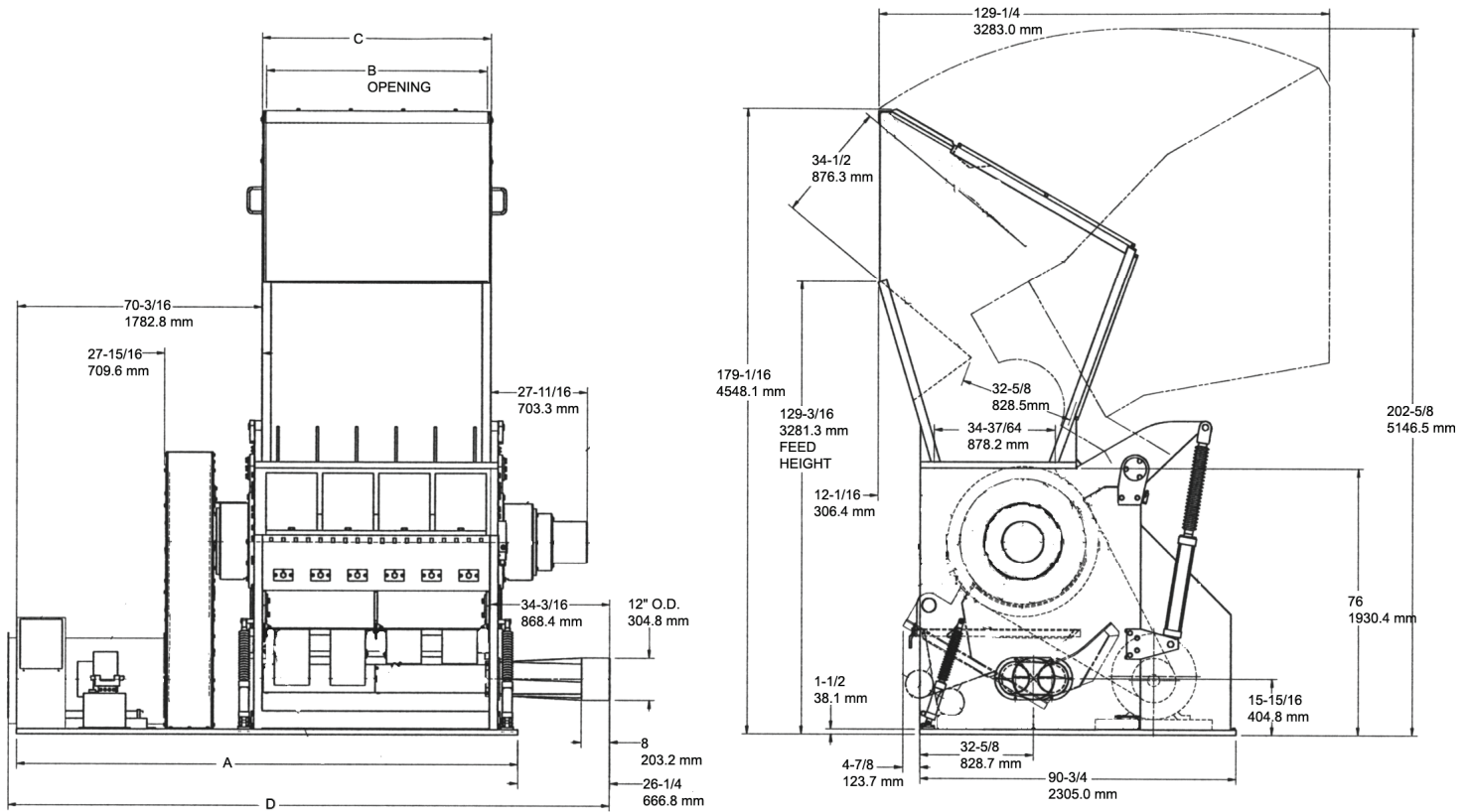
Specifications:

	Standard	Standard Options	Special Options
Infeed	Conveyor feed	Sheet feed Tray and feed roll Tray feed Pipe feed	
Cutting Chamber Rotor	2-bed knife	Hard faced, Water cooling	3rd bed knife
	3-knife offset	5-knife offset 20 knife hog (model 3242) 30 knife hog (model 3263)	5-knife Twinshear 7-knife Twinshear 9-knife Twinshear 12-knife Twinshear
Rotor Knives	HCHC, 55°, S/A	HCHC, Hog type	
Bed Knives	HCHC		
Screen	3/8" dia. non-heat-treated	3/16" to 4" diameter	4140, heat-treated
Base	Low-profile		
Discharge	12" Airveyor chute (models 3242 and 3263) 14" Airveyor chute (model 3284)	Conveyor	
Motor	150 HP (model 3242) 200 HP (model 3263) 250 HP (model 3284) 1200 RPM, TEFC, 3/60/230/460	150 HP – 400 HP, TEFC	Special voltages, customer supplied motors
Drive Parts	V-belt	Dual flywheel	Customer supplied
Electrical Components	NEMA 12 with safety interlocks		
Controls	Hydraulic Power Pack for hopper and screen cradle	460 volt	Special voltages, reduced voltage starter
Labels	Safety labels/English	French/Spanish	
Accessories		Blower, separator, common stand, conveyor	

— See Page 2 For 3200 Series Drawings —



Cumberland 3200 Series Granulators



Dimensions:

Model	A	B	C	D
3242	122 1/2 (3111.5 mm)	42 1/8 (1070.0 mm)	44 3/8 (1127.1 mm)	161 1/8 (4092.6 mm)
3263	143 1/2 (3644.9 mm)	63 1/8 (1603.4 mm)	65 3/8 (1660.5 mm)	172 1/8 (4372.0 mm)
3284	164 1/2 (4178.3 mm)	84 1/8 (2136.8 mm)	86 3/8 (2193.9 mm)	183 1/8 (4651.4 mm)