



## 6.5 Series Granulators

### Application:

### Features:

Model	Throat Size	Cutting Circle Diameter	Throughput	Approximate Weight
6508	6.5" x 8" (165 x 203 mm)	6.5" (165 mm)	100 lbs./hr. (45 kg)	507 lbs. (230 kg)
6512	6.5" x 12" (165 x 304 mm)	6.5" (165 mm)	150 lbs./hr. (68 kg)	530 lbs. (240 kg)
6516	6.5" x 16" (165 x 406 mm)	6.5" (165 mm)	200 lbs./hr. (91 kg)	550 lbs. (250 kg)

### Benefits:

- Multipurpose infeed perfect for hand, robot or conveyor feed applications.
- Double-walled insulated hopper.
- Quick and easy access for labor saving cleanout and changeovers.
- Bolted and doweled cutting chamber.
- Small footprint saves valuable floor space.
- NEMA Type 12 enclosure for airtight, trouble-free electrical operation.
- Integral bearing housing design with sealed-for-life bearings.
- 2 adjustable, counter-slanted bed knives.
- Durable rotor knives with high-quality D2 tool steel construction.

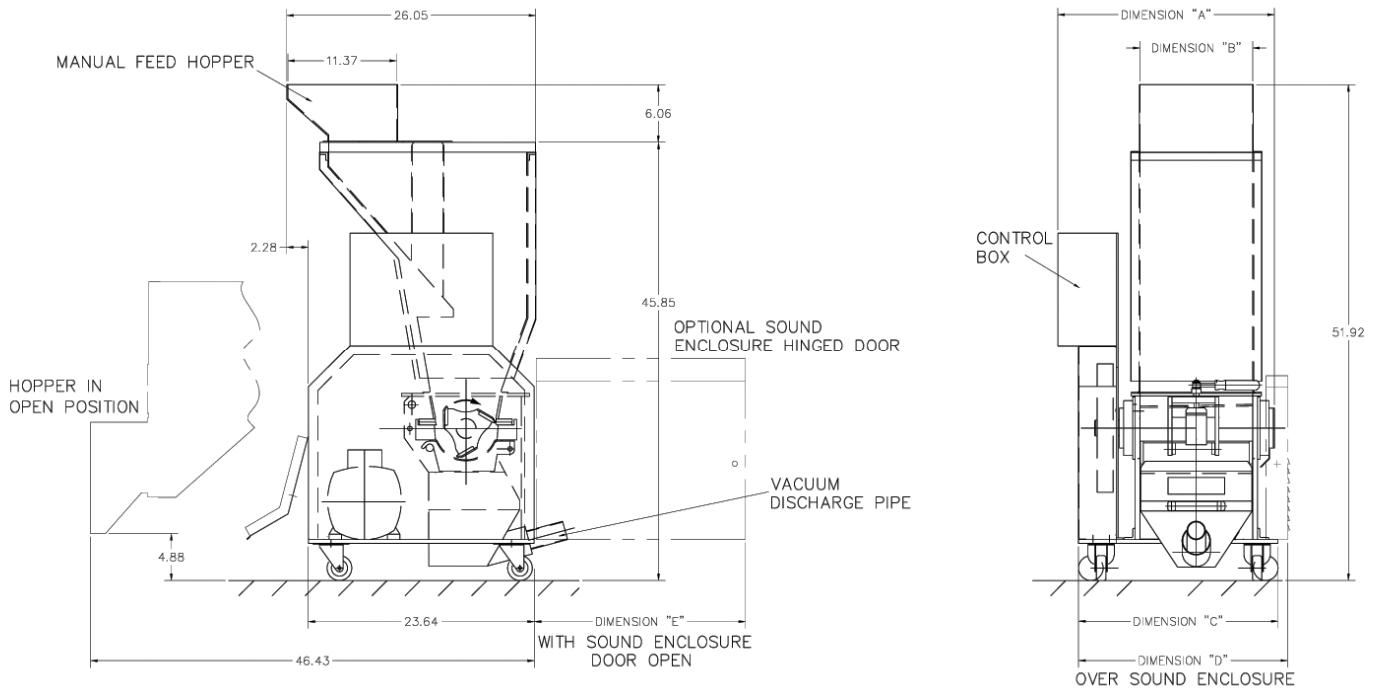
### Specifications:

	Standard	Standard Options
Infeed	Multi-feed hopper, double wall	Hopper extensions for high-drop applications
Cutting Chamber	2 counter-slant bed knives, drop down screen cradle	Wear resistant components, sound enclosure
Rotor	3 knife open rotor, scooped wings, slant cut knives	Staggered knife, open rotor with wedge held "cassette knives", wear resistant components
Rotor Knives	D2 HCHC Heat treated	
Bed Knives	D2 HCHC Heat treated	
Screen	3/16"	1/4", 5/16"
Base	Caster-mounted	Super-low for under-the-press, high base with larger capacity bin and valve sack discharge
Discharge	Large capacity vacuum bin	Compressed air venturi system
Motor	3 HP	5HP
Drive Parts	High-inertia flywheel with automatic drive belt tensioning	
Electrical Components	Start/stop push buttons, safety interlocks	
Controls	NEMA Type 12	
Labels	English	Spanish, French
Accessories		

— See Page 2 For 6.5 Series Drawings —



## Cumberland 6.5 Series Granulators



Model	Dimensions in. (mm)				
	A	B	C	D	E
716	26.67 (677)	15.81 (402)	24.86 (631)	25.88 (657)	25.97 (670)
712	22.67 (576))	11.81 (300)	20.86 (530)	21.88 (556)	21.97 (558)
708	18.67 (474)	7.81 (198)	16.86 (428)	17.88 (454)	17.97 (456)