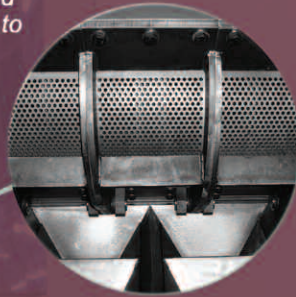


# CT500 Series Granulator

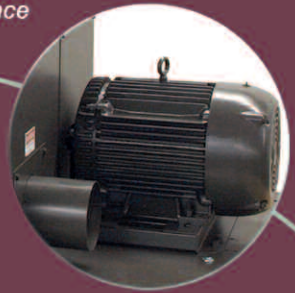
Flange mount hopper interface allows unlimited configuration options, and customization of infeed to suit application needs



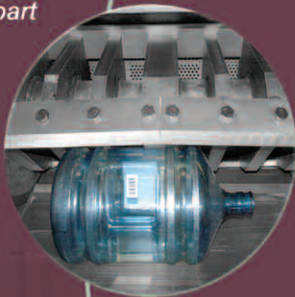
Standard tangential cutting chamber can be modified for bed knife placement to suit changing and demanding production requirements



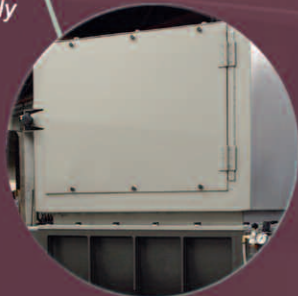
Side mounted motor placement reduces footprint and optimizes access for cleanout and maintenance



Twin shear rotor configuration for superior and optimized part ingestion



Rear hopper access door, safely interlocked, for ease of cleanout and inspection

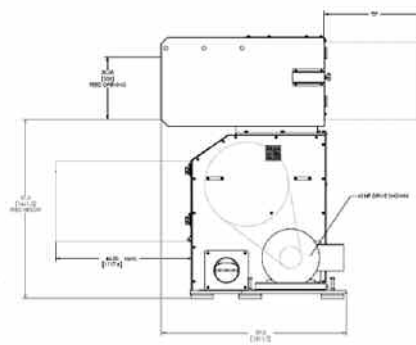
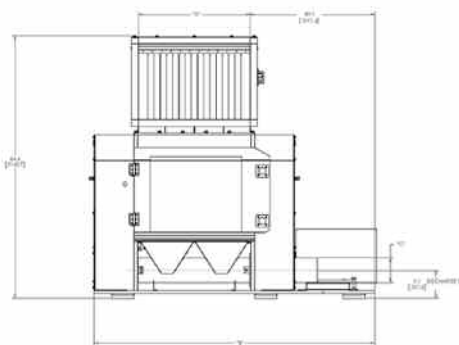


# CT500 Series Granulator

## Standard Features

- The CT500 Series includes 712mm ( 28"), 915mm ( 36") and 1220mm (48") wide models for a wide range of applications
- Motor range includes 30kW (40hp), 37kW ( 50hp), 45kW (60hp), 55kW (75hp), and 75kW (100hp) TEFC motors
- Cutting chamber geometries are available for tangential, offset, and 3-bed knife orientations
- Available in 3- and 5- knife rotor versions, with steep angle or high shear knives, the CT500 Series encompasses the widest range of possible applications
- Optional dual-flywheel structure for increasing performance via added cutting inertia
- Standard configuration is sound suppressed, with option for full sound enclosed configuration
- Large 500mm (20") cutting circle for enhanced part ingestion
- Side mount motor design permits drive motor to be right-hand or left-hand positioned and completely opens rear service area for maintenance and clean out
- Discharge is right-hand or left-hand regardless of motor placement
- Innovative design creates enlarged screen area via segmented swing-down reversible screens which provides optimized accessibility, increased throughput and minimal clean out and maintenance access time
- Industry leading unique design enhances safety measures and creates easy serviceability
- Rotational side walls limit friction and smearing and improve granulate quality. Outboard bearing mounting increases bearing protection to the highest level, and eases maintenance steps
- Open wing rotor style enhances throughput while increasing cutting performance
- Mechanical rotor lock for maintenance
- Air purge bearings for cooling and contamination prevention

Model	Cutting Chamber Size (mm, in)	Rotor	Motor (kW, hp)	Throughput (kg, lbs.)
CT-5070	508mm x 712mm (20" x 28")	3 or 5 knife, open rotor	30kW (40hp) std., 37kW (50hp), 45kW (60hp), 55kW (75 hp), 75kW (100hp) option	up to 900 kg/hr (2000 lbs./hr)
CT-5090	508mm x 915mm (20" x 36")	3 or 5 knife, open rotor	37kW (50hp) std., 45kW (60hp), 55kW (75hp), 75kW (100hp) option	up to 1350 kg/hr ( 3000 lbs./hr)
CT-50120	508mm x 1220mm (20" x 48")	3 or 5 knife, open rotor	55kW (75hp) std, 75kW (100hp) option	up to 1575 kg/hr (3500 lbs./hr)



Dimensions (in, mm)				
Model	A	B	C	D
CT-5070	28" (712mm)	82.4" (2092mm)	6" (152mm)	32" (812mm)
CT-5090	36" (915mm)	90.4" (2295mm)	8" (200mm)	4" (1016mm)
CT-50120	48" (1220mm)	102.4" (2600mm)	10" (254mm)	52" (1320mm)



### CORPORATE HEADQUARTERS

2900 S. 160th Street  
New Berlin, WI 53151  
TEL: (262) 641-8600  
FAX: (262) 641-8653  
[www.cumberland-plastics.com](http://www.cumberland-plastics.com)

### REGIONAL SERVICE CENTERS (800) 229-2919

ACS- Tech Center  
4100 Market Place  
Flint, MI 48507  
TEL: (810) 720-7300  
FAX: (810) 720-2598

ALL DATA SUBJECT TO CHANGE WITHOUT NOTICE

©2010 Cumberland Engineering

Bulletin CG6-100.2