



Technical Specification

H Series Granulators



Tel (262) 641-8600 • Fax (262) 641-8653 • www.cumberland-plastics.com • Bulletin: CG3-916.1 • Effective: June 14, 2010 • Supersedes: CG3-916

H Series Granulators

Application:

For heavy extruder purgings, sheet and pipe scrap. The H Series Granulators are ideal for pipe, purgings, x-ray film, sheets, post consumer baled bottles, film, and fibers. The H Series granulators feature helical hog rotors

Features:

Model	Throat Size	Cutting Circle Diameter	Throughput	Approximate Weight
C1000H	20 1/2" x 40" (520 x 1000 mm)	18" (460 mm)	3000 lbs./hr. (1363 kg)	14,000 lbs. (6360 kg)
C1400H	20 1/2" x 56" (520 x 1400 mm)	18" (460 mm)	3500 lbs./hr. (1600 kg)	17,000 lbs. (7730 kg)
37H	18" x 37" (457 x 940 mm)	16" (406 mm)	3000 lbs./hr. (1363 kg)	12,000 lbs. (5455 kg)
50H	20" x 50" (510 x 1270 mm)	18" (460 mm)	4000 lbs./hr. (1818 kg)	18,000 lbs. (8181 kg)

Benefits:

- Heavy-duty construction allows granulator to handle heavier loads.
- The rotor knives are bolted to the rotor with high-strength alloy steel bolts.
- Reinforced, heavy-duty screen cradle.
- Housed heavy-duty precision spherical roller bearings
- The C- Series hopper has sound-absorbent materials to minimize airborne and structural noise.
- Heavy duty overall construction: main frame, rotor, downstroke shield, steel plate bedknife blocks & belts. Larger, spherical roller bearings and heavy-duty flywheel sheave.
- Power operated on the C-Series jack screws tilt the hopper and drop the screen cradle for ease of maintenance and clean-out.

C1000H and C1400H Specifications (Consult Factory for Special Options):

	C1000H		C1400H	
	Standard	Std. Option	Standard	Std. Option
Infeed	Conveyor feed	Sheet feed, Side feed, Pipe feed, Tray feed	Conveyor feed	Conveyor and sheet feed, Conveyor and pipe feed, Sheet feed, Side feed
Cutting Chamber	2 bed knife, Raised D/S	3 bed knife	2-bed knife, Raised D/S	3 bed knife
Rotor	15-knife helical hog		21-knife helical hog	
Rotor Knives	HCHC, Hog type		HCHC, Hog type	
Bed Knives	HCHC, 2-edge		HCHC, 2-edge	
Screen	3/8" dia., HT, swing down	3/16" to 3" diameter	3/8" dia., HT, swing down	3/16" to 3" diameter
Base	Airveyor		Airveyor	
Discharge	10" Airveyor chute	8-12" Airveyor chute	12" Airveyor chute	10" Airveyor chute
Motor	150 HP, 1800 RPM, TEFC, 3/60/460	100 HP, 125 HP, 200, 250 HP, TEFC	200 HP, 1800 RPM, TEFC, 3/60/460	100 HP, 125 HP, 150 HP 250 HP, TEFC
Drive Parts	V-belt, dual flywheels		V-belt, dual flywheels	
Electrical Components	NEMA 12 with safety interlocks		NEMA 12 with safety interlocks	
Controls	Customer supplied	NEMA 12	Customer supplied	NEMA 12
Labels	Safety labels/English	French/Spanish	Safety labels/English	French/Spanish
Accessories		Blower, separator		Blower, separator

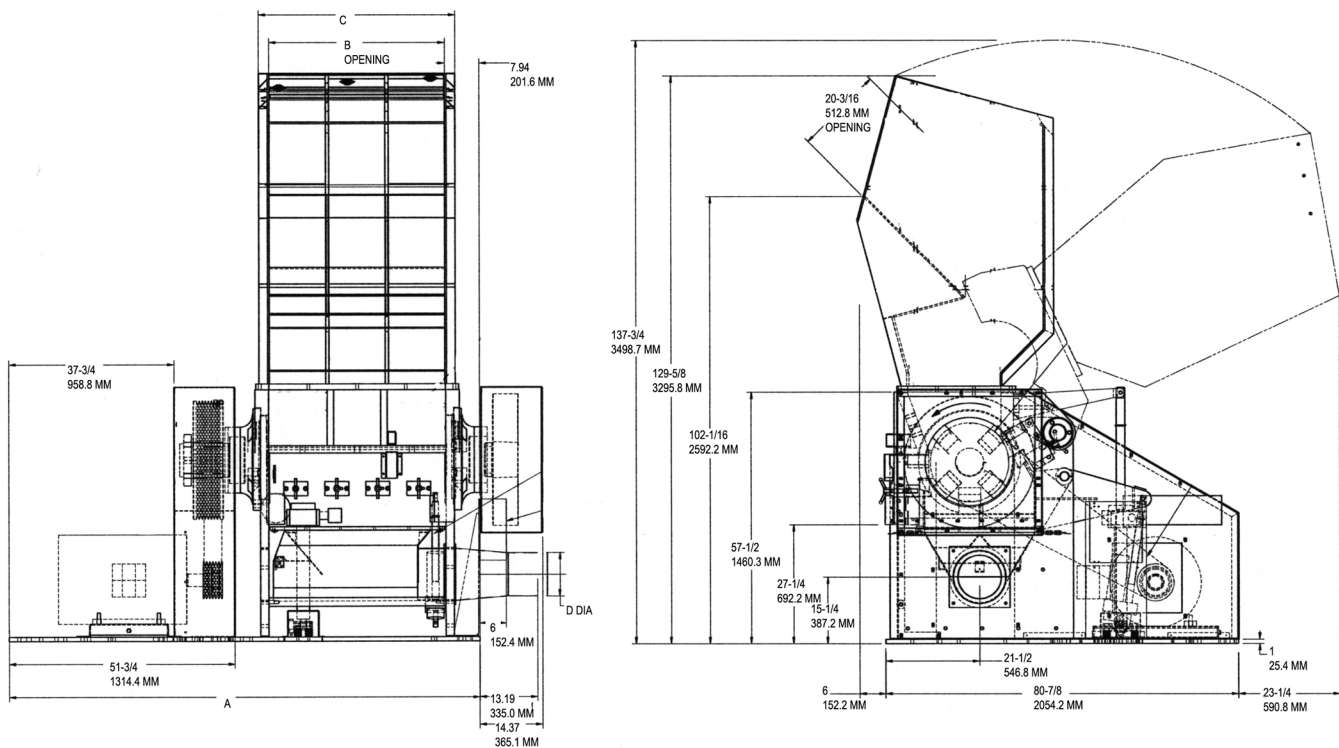
— See Page 2 For 37H and 50H Specifications and H Series Drawings —



37H and 50H Specifications

	37H		50H	
	Standard	Standard Options	Standard	Standard Options
Infeed	Conveyor Feed	Tray and sheet feed Tray and pipe feed Pipe feed	Conveyor Feed	Tray and sheet feed Tray and pipe feed Pipe feed
Cutting Chamber	2-bed knife	Hard-facing, water cooling, air purged	2-bed knife	Hard-facing, water cooled, Air purge bearings
Rotor	15-blade Helical Hog		18-blade Helical Hog	25-blade Helical Hog
Rotor Knives	15 HCHC		18 HCHC	
Bed Knives	2 HCHC		2HCHC	
Screen	3/8" Heat Treated	1/4" and larger	3/8" Heat Treated	1/4" and larger
Base	37" Step type	Gaylord	37" Step type	Gaylord
Discharge	8" Airveyor Chute	Gaylord, 8-12" Airveyor	10" Airveyor Chute	Gaylord
Motor	100 HP	100-150 HP	200 HP	100-200 HP
Drive Parts	V-belt		V-belt	
Electrical Components	NEMA 12 with safety interlocks		NEMA 12 with safety interlocks	
Controls	Customer Supplied	230, 460, or 575 volt, NEMA 12	Customer Supplied	
Labels	Safety/caution/operation labels English	Spanish/French	Safety/caution/operation labels English	Spanish/French
Accessories		Blower, Cyclone, Separator, Conveyor		

C1000H and C1400H

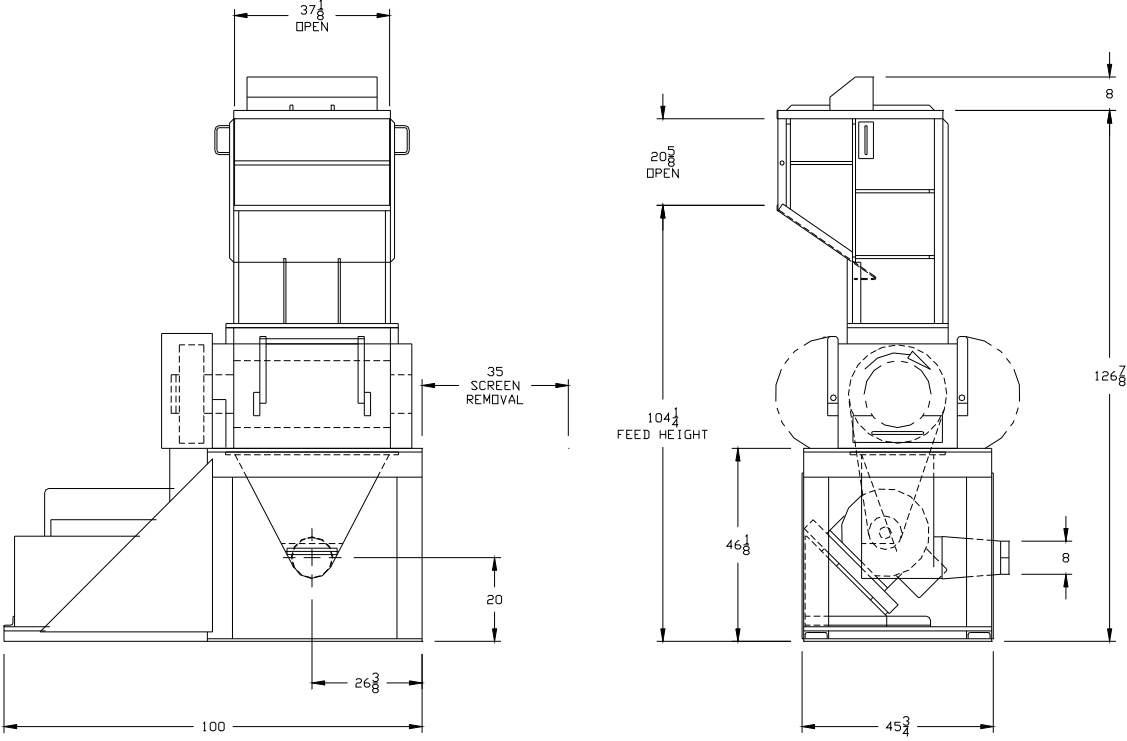


Dimensions

Model	A	B	C	D
C1000H	107 3/4" (2736.9 mm)	40 1/8" (1019.2 mm)	44 7/8" (1139.8 mm)	10" (254.0 mm)

C1400H	123 3/4' (3143.3 mm)	56 1/8' (1425.6 mm)	60 7/8" (1546.2 mm)	12" (304.8 mm)
--------	----------------------	---------------------	---------------------	----------------

37H:



50H:

