

Tangential Series Granulator

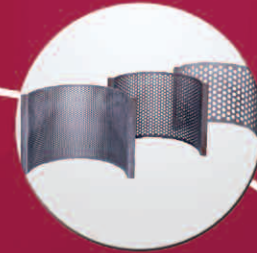
High carbon, high chrome D2 knives for maximum knife quality and consistency. Solid knife carriers provides extra support



Optional load meter to assist operator



Reversible screens for longer life on a swing down/removable cradle for ease of cleaning



Dual solid flywheels offer standard heavy duty cutting inertia



Heavy duty, easy access base creating a stronger design with easy clean out and servicing



Reclaim Large, Bulk Parts With a Medium-Sized Granulator

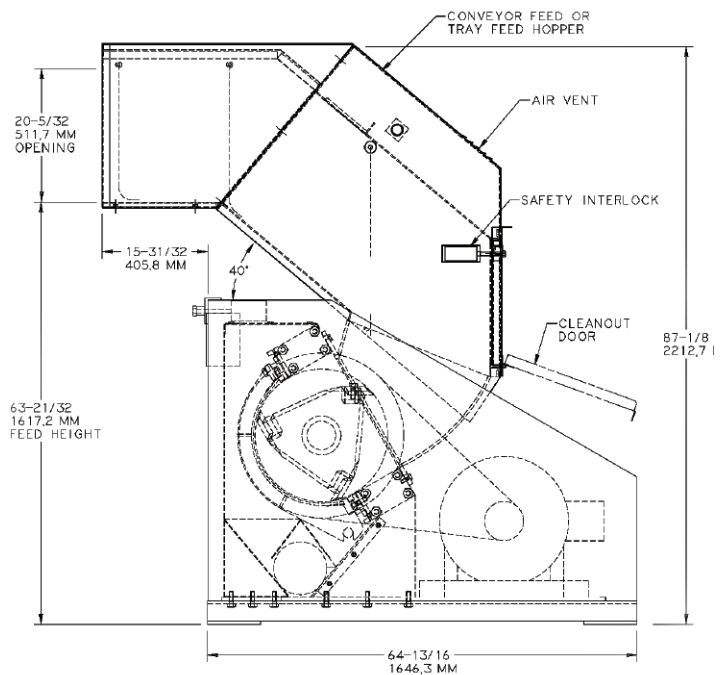
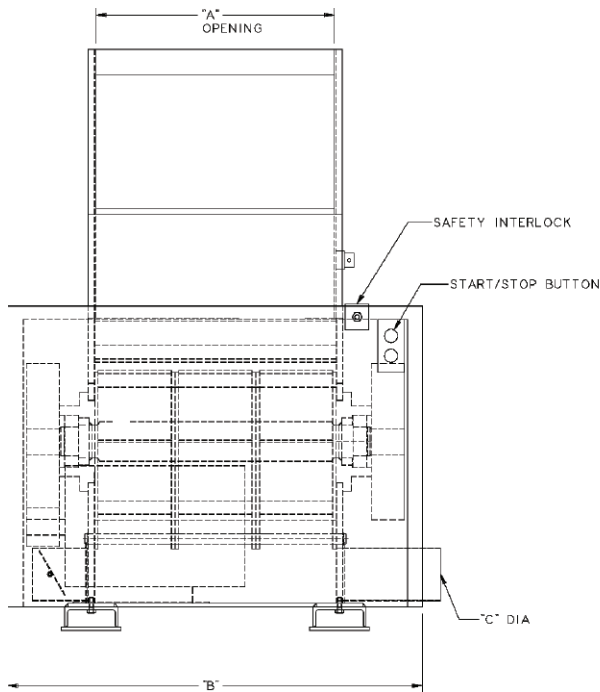
Tangential Series granulators come in two sizes—the 2024 and the 2036. The special cutting chamber designs draw the products into the lower bed knife, where the cutting action traps the item between the rotor knife and bed knife “jaw”. They offer customers a solution

to granulation problems by minimizing part bouncing and optimizing material processing for large bulky parts. In this way, the larger items from rotational molding, large injection molding, and blow molding are more easily accepting, ingested, and processed.

Tangential Series Granulators

Standard Features

- Angled infeed for easy hand or conveyor feed
- Convenient lower feed height of 63"
- Fully sound dampened to 85dBa or less for most applications
- Tangential feed design for improved application versatility
- Machine bolted/doweled assembly for ease of cleaning and replacement
- Dual bed knives-counter slant, reversible and adjustable doubling knife life
- 3 knife slant cut rotor (steep angle) including solid knife carriers
- Open design-scooped rotor for maximum air flow and ingestion of product
- High carbon, high chrome (D2) rotor and bed knives
- Large 20" cutting circle on rotor for efficient processing of large bulky parts
- Swing down reversible screens with solid edges doubling screen life and providing easy maintenance
- Airveyor discharge standard
- TEFC design—1800 RPM motor with sliding motor base
- NEMA 12 controls with safety switch meeting latest OSHA/ANSI specifications
- Disconnect switch/115V to push button provides safer design



Model	A	B	C
20x24TF	24"	52 5/8"	6"
20x36TF	36"	62 5/8"	8"



CORPORATE HEADQUARTERS

2900 S. 160th Street
 New Berlin, WI 53151
 TEL: (262) 641-8600
 FAX: (262) 641-8653
www.cumberland-plastics.com

REGIONAL SERVICE CENTERS (800) 229-2919

ACS Tech Center
 4100 Market Place
 Flint, MI 48507
 TEL: (810) 720-7300
 FAX: (810) 720-2598

ALL DATA SUBJECT TO CHANGE WITHOUT NOTICE

©2010 Cumberland Engineering

Bulletin CG5-115.3