



Technical Specification

X Series Granulators



Tel (508) 399-6400 • Fax (508) 399-6653 • www.cumberland-plastics.com • Bulletin: CG6-515 • Effective: September 29, 2003 • Supersedes: New

X Series Granulators

Application:

For reclaiming injection molded, blow molded, or extruded scrap. The X Series Granulators are ideal for blow moldings, automotive moldings, ducts, furniture and appliance parts, sprues, runners, bottles, profiles, pipe, light purgings, X-ray film, film and sheet (to 3/16" thick), and cosmetic and pharmaceutical destruction.

Features:

Model	Throat Size	Cutting Circle Diameter	Throughput	Approximate Weight
X700	24" x 28" (600 x 700 mm)	23 5/8" (600 mm)	1800 lbs./hr. (820 kg.)	10,000 lbs. (4575 kg.)
X1000	24" x 40" (600 x 1000 mm)	23 5/8" (600 mm)	2500 lbs./hr. (1200 kg.)	12,300 lbs. (5560 kg.)
X1400	24" x 56" (600 x 1400 mm)	23 5/8" (600 mm)	3500 lbs./hr. (1600 kg.)	16,000 lbs. (7279 kg.)

Benefits:

- Heavy-duty construction allows granulator to handle heavier loads.
- The rotor knives are bolted to the rotor with high-strength alloy steel bolts.
- Power operated jack screws tilt the hopper and drop the screen cradle for ease of maintenance and clean-out.
- Optimum cutting efficiency with Twinshear® knife configuration.
- 3-Chevron-positioned rotor knives scissor cut against the bed knives to provide optimum cutting efficiency, with low power consumption.
- Outboard mounted, heavy-duty, spherical roller bearings prevent bearing contamination.
- The hopper has sound-absorbent materials to minimize airborne and structural noise.
- Open-wing rotor produces high quality granulate.
- Rotating end rings to prevent frictional heat and to prevent dirt migrating into the bearings.
- Heavy duty overall construction: main frame, rotor, downstroke shield, steel plate bedknife blocks & belts. Larger, spherical roller bearings and heavy-duty flywheel sheave.
- Reinforced, heavy-duty screen cradle.
- Pivoting hopper facilitates cleanout and/or maintenance.

Specifications:

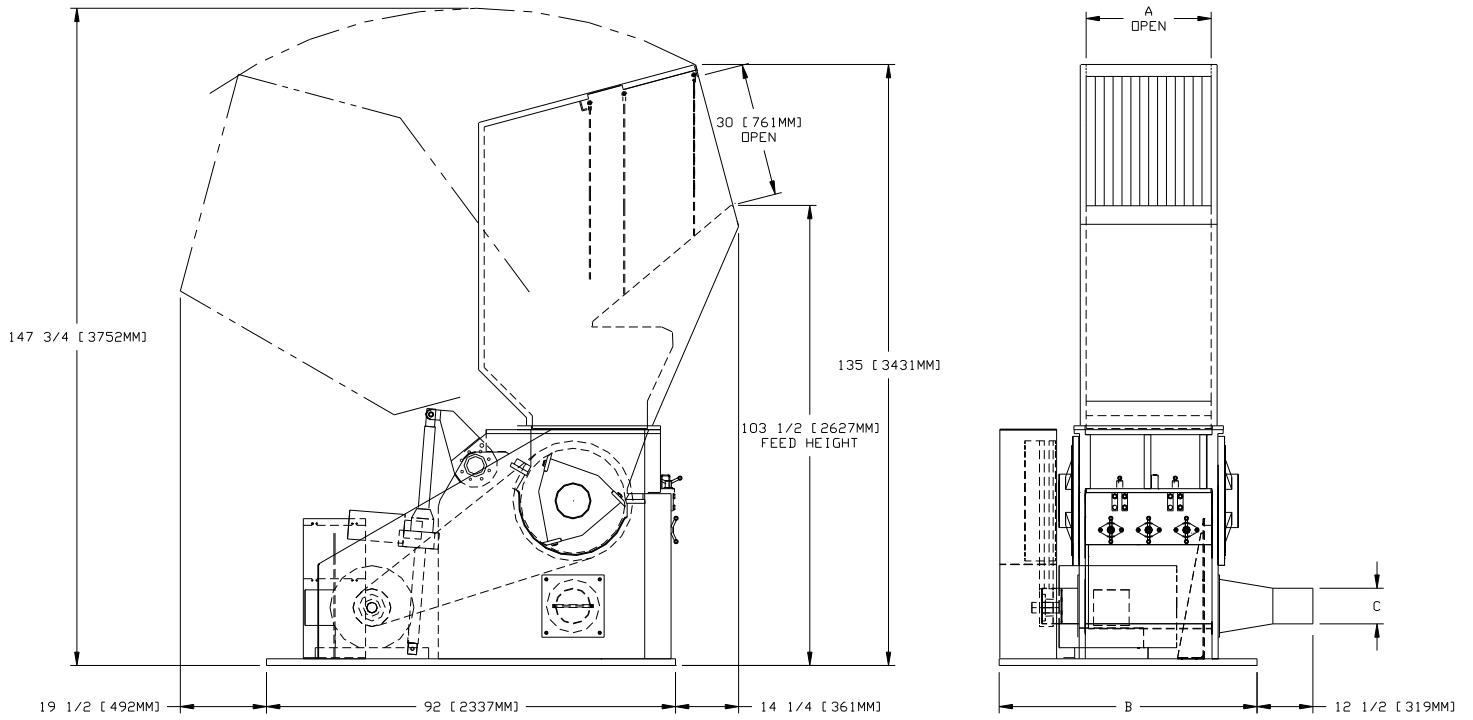
	Standard	Standard Options
Infeed	Conveyor feed	Tray and sheet feed, Tray and pipe feed, Tray and feed rolls, Feed rolls only, Side feed
Cutting Chamber	2-bed knife, Twinshear®	(3) bed knife, 7-knife twinshear® for X1000 and X1400
Rotor	3-knife Twinshear®	5-knife Twinshear®
Rotor Knives	HCHC, 55°, steep angle	HCHC, keen edge
Bed Knives	HCHC, 2-edge	
Screen	3/8" dia., swing down	3/16" to 3" diameter
Base	Airveyor	
Drive Parts	V-belt	
Electrical Components	NEMA 12 with safety interlocks	
Controls	Customer supplied	NEMA 12
Labels	Safety labels/English	French/Spanish
Accessories		Blower, separator, common stand

Model	Discharge		Motor	
	Standard	Standard Options	Standard	Standard Options
X700	8" Airveyor Chute	10" Airveyor Chute	50 HP, 1800 rpm, TEFC, 3/60/230/460	75HP, 100HP, TEFC
X1000	10" Airveyor Chute		100 HP, 1800 rpm, TEFC, 3/60/230/460	100 HP, 150 HP, TEFC
X1400	12" Airveyor Chute	10-14" Airveyor Chute	125 HP, 1800 rpm, TEFC, 3/60/230/460	100 HP, 150 HP, TEFC

□ See Page 2 For X Series Drawings □



Cumberland X Series Granulators



Dimensions

Model	A	B	C
X700	28 1/4" (714 mm)	58" (1473 mm)	8" (203 mm)
X1000	40 1/4" (1019 mm)	70" (1778 mm)	10" (254 mm)
X1400	56" (1424 mm)	86" (2184 mm)	12" (305 mm)