



Technical Specification

X Series Granulators



Tel (262) 641-8600 • Fax (262) 641-8653 • www.cumberland-plastics.com • Bulletin: CG6-515.1 • Effective: June 15, 2010 • Supersedes: CG6-515.1

X Series Granulators

Application:

For reclaiming injection molded, blow molded, or extruded scrap. The X Series Granulators are ideal for blow moldings, automotive moldings, ducts, furniture and appliance parts, sprues, runners, bottles, profiles, pipe, light purgings, X-ray film, film and sheet (to 3/16" thick), and cosmetic and pharmaceutical destruction.

Features:

| Model | Throat Size | Cutting Circle Diameter | Throughput | Approximate Weight |
|-------|---------------------------|-------------------------|--------------------------|------------------------|
| X700 | 24" x 28" (600 x 700 mm) | 23 5/8" (600 mm) | 1800 lbs./hr. (820 kg.) | 10,000 lbs. (4575 kg.) |
| X1000 | 24" x 40" (600 x 1000 mm) | 23 5/8" (600 mm) | 2500 lbs./hr. (1200 kg.) | 12,300 lbs. (5560 kg.) |
| X1400 | 24" x 56" (600 x 1400 mm) | 23 5/8" (600 mm) | 3500 lbs./hr. (1600 kg.) | 16,000 lbs. (7279 kg.) |

Benefits:

- Heavy-duty construction allows granulator to handle heavier loads.
- The rotor knives are bolted to the rotor with high-strength alloy steel bolts.
- Power operated jack screws tilt the hopper and drop the screen cradle for ease of maintenance and clean-out.
- Optimum cutting efficiency with Twinshear knife configuration.
- 3-Chevron-positioned rotor knives scissor cut against the bed knives to provide optimum cutting efficiency, with low power consumption.
- Outboard mounted, heavy-duty, spherical roller bearings prevent bearing contamination.
- The hopper has sound-absorbent materials to minimize airborne and structural noise.
- Open-wing rotor produces high quality granulate.
- Rotating end rings to prevent frictional heat and to prevent dirt migrating into the bearings.
- Heavy duty overall construction: main frame, rotor, downstroke shield, steel plate bedknife blocks & belts. Larger, spherical roller bearings and heavy-duty flywheel sheave.
- Reinforced, heavy-duty screen cradle.
- Pivoting hopper facilitates cleanout and/or maintenance.

Specifications:

| | Standard | Standard Options |
|-----------------------|--------------------------------|--|
| Infeed | Conveyor feed | Tray and sheet feed, Tray and pipe feed, Tray and feed rolls, Feed rolls only, Side feed |
| Cutting Chamber | 2-bed knife, Twinshear | (3) bed knife, 7-knife twinshear for X1000 and X1400 |
| Rotor | 3-knife Twinshear | 5-knife Twinshear |
| Rotor Knives | HCHC, 55°, steep angle | HCHC, keen edge |
| Bed Knives | HCHC, 2-edge | |
| Screen | 3/8" dia., swing down | 3/16" to 3" diameter |
| Base | Airveyor | |
| Drive Parts | V-belt | |
| Electrical Components | NEMA 12 with safety interlocks | |
| Controls | Customer supplied | NEMA 12 |
| Labels | Safety labels/English | French/Spanish |
| Accessories | | Blower, separator, common stand |

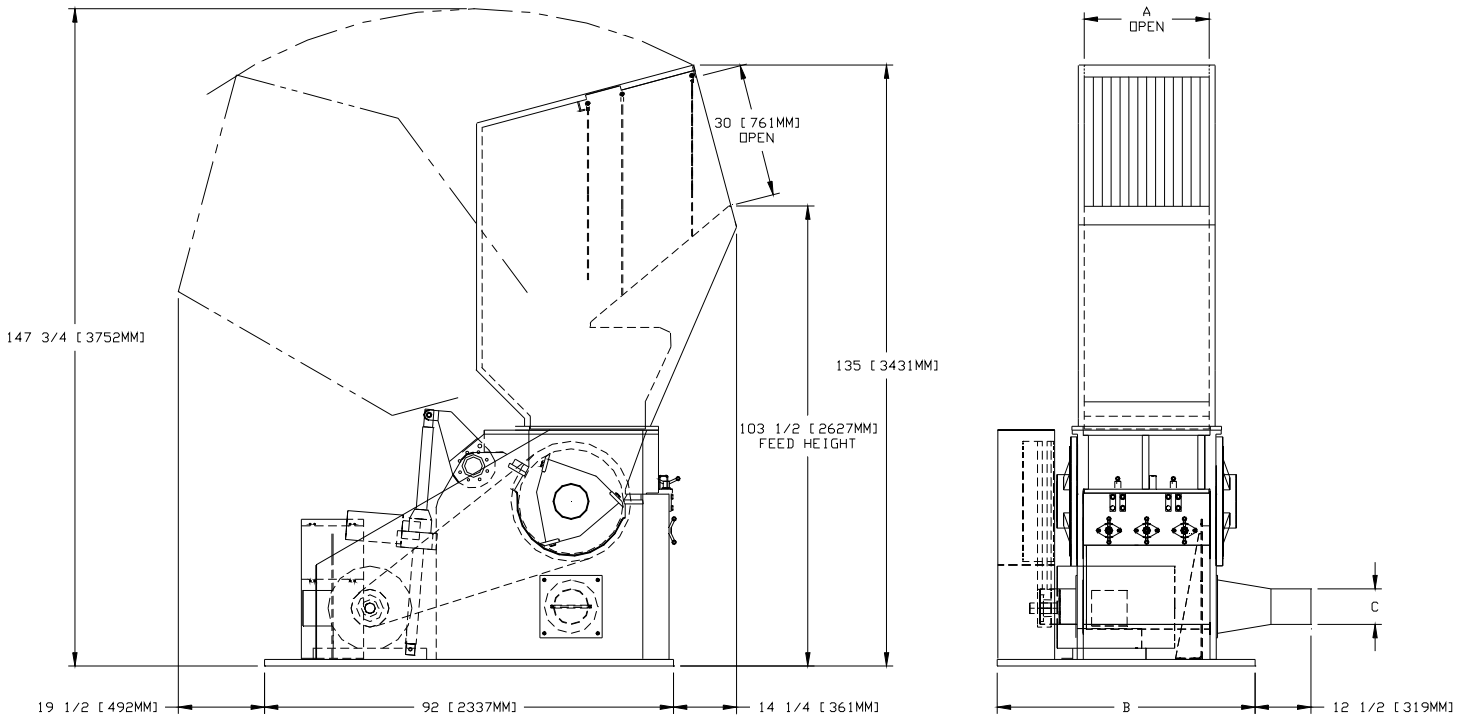
| Model | Discharge | | Motor | |
|-------|--------------------|-----------------------|--------------------------------------|----------------------|
| | Standard | Standard Options | Standard | Standard Options |
| X700 | 8" Airveyor Chute | 10" Airveyor Chute | 50 HP, 1800 rpm, TEFC, 3/60/230/460 | 75HP, 100HP, TEFC |
| X1000 | 10" Airveyor Chute | | 100 HP, 1800 rpm, TEFC, 3/60/230/460 | 100 HP, 150 HP, TEFC |
| X1400 | 12" Airveyor Chute | 10-14" Airveyor Chute | 125 HP, 1800 rpm, TEFC, 3/60/230/460 | 100 HP, 150 HP, TEFC |

— See Page 2 For X Series Drawings —



Cumberland Engineering LLC • 2900 S. 160th Street • New Berlin, WI 53151

Cumberland X Series Granulators



Dimensions

| Model | A | B | C |
|-------|-------------------|---------------|--------------|
| X700 | 28 1/4" (714 mm) | 58" (1473 mm) | 8" (203 mm) |
| X1000 | 40 1/4" (1019 mm) | 70" (1778 mm) | 10" (254 mm) |
| X1400 | 56" (1424 mm) | 86" (2184 mm) | 12" (305 mm) |